

# 24 VOLT CONVEYOR PARTS

Powered by  
**24  
VOLT**

**NORTHAMCON SUPPLIES PARTS TO REPLACE EXISTING CONVEYOR COMPONENTS OR RE-PURPOSE EXISTING CONVEYORS INCLUDING GRAVITY, LINESHAFT, BDLR AND CDLR**

Motorized rollers, flat motors, driver cards, idler rollers, cables, photo-eyes and accessories.  
Additional parts and custom options are available such as frames, legs, side guides, stops etc.  
Consult factory for more details.

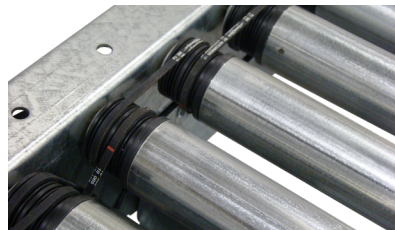
## BELTS & CHAIN

\*Guard is removed for clarity. Guards must be in place before operating equipment.

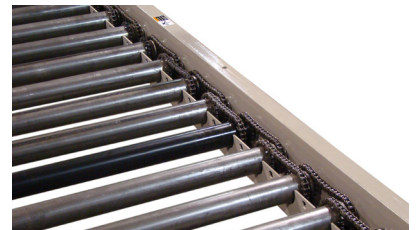
### O-Ring



### Poly Ribbed Belt\*



### Roller Chain\*



## MOTORS, ROLLERS, AND DRIVER CARDS



### Itoh Denki



### Pulse



### Flat Motor



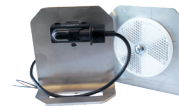
### Geared Drive



### Idler Roller

Made to order with your specific dimensions

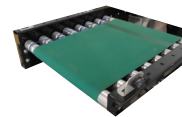
## PARTS AND ACCESSORIES



### Photo-Eyes



### Power Distribution Cables Ethernet Cables Extension Cables



### Belt Over Roller



### Urethane Sleeves (straight & tapered)



### Mounting Brackets

Modern  
Conveyor  
Utilizing  
24V Drive  
Technology