

# 24 VOLT CONVEYOR PARTS

Expansive Offering of 24 Volt Parts and Solutions

- New Application
- Replacement
- Retrofit



## NORTHAMCON INC

### BUILD YOUR OWN 24V CONVEYOR

#### Convert:

GRAVITY  
LINE SHAFT  
BDLR | CDLR

To: MDR | FMDR

#### Options On:

DRIVE MOTORS, DRIVER CARDS, IDLER ROLLERS, CABLES, PHOTO-EYES

Frames - 12 ga mild steel formed channel 7" & 9" standard,  
(Ask about custom frames and optional lexan covers)

Legs - H style floor supports 14.25" TOR and up (optional knee braces and casters)

Side Guides - fixed angle/channel or adjustable

Stops - formed angle/channel or flat plate

#### Motorized Roller and Driver Cards

##### Mech-Roller



##### IT



##### PU

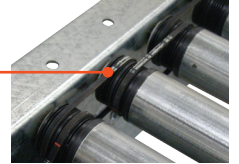


#### Drive Method

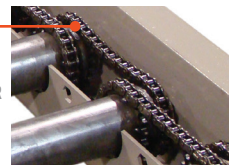
##### O-Ring



##### Poly Ribbed Belt\*



##### Roller Chain\*



\*GUARD IS REMOVED FOR CLARITY. GUARDS MUST BE IN PLACE BEFORE OPERATING EQUIPMENT.



#### Idler Roller

Made to order with your specific dimensions

#### Flat Motor Driven Roller

Mech-Drive



### AVAILABLE OPTIONS & ACCESSORIES

#### Photo-Eyes



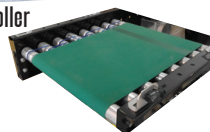
#### Power Distribution Cables, Com-Cables, Extension Cables



#### Urethane Sleeves (straight & tapered)



#### Belt Over Roller



#### Square Roller



#### Geared Drive



NORTHAMCON, Inc.

(989) 358 6119

sales@northamcon.com

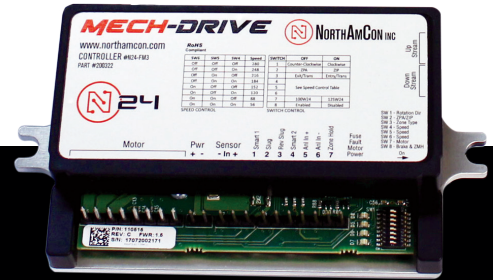
P.O. Box 454, Alpena, MI 49707

northamcon.com

# STANDARD 24V FMDR CONVEYOR

## 5', 10' SECTIONS & 90° CURVES

- Zero pressure or Transportation
- STANDARD: 12" - 36" BF (between frame)
- **STOCKED:** 16" & 24" BF
- 1.9" Galvanized rollers with ABEC bearings
- Rollers set high or low on 3" centers - driven by high tension blue urethane bands
- 12 Ga formed mild steel channel frames with Lexan covers
- Bolted construction, powder coated gloss black
- OPTIONAL SUPPORTS: H-style legs or ceiling hangers
- OPTIONAL: Side guides



**NORTHAMCON** INC

NORTHAMCON, Inc.  
(989) 358 6119  
sales@northamcon.com  
P.O. Box 454, Alpena, MI 49707  
northamcon.com